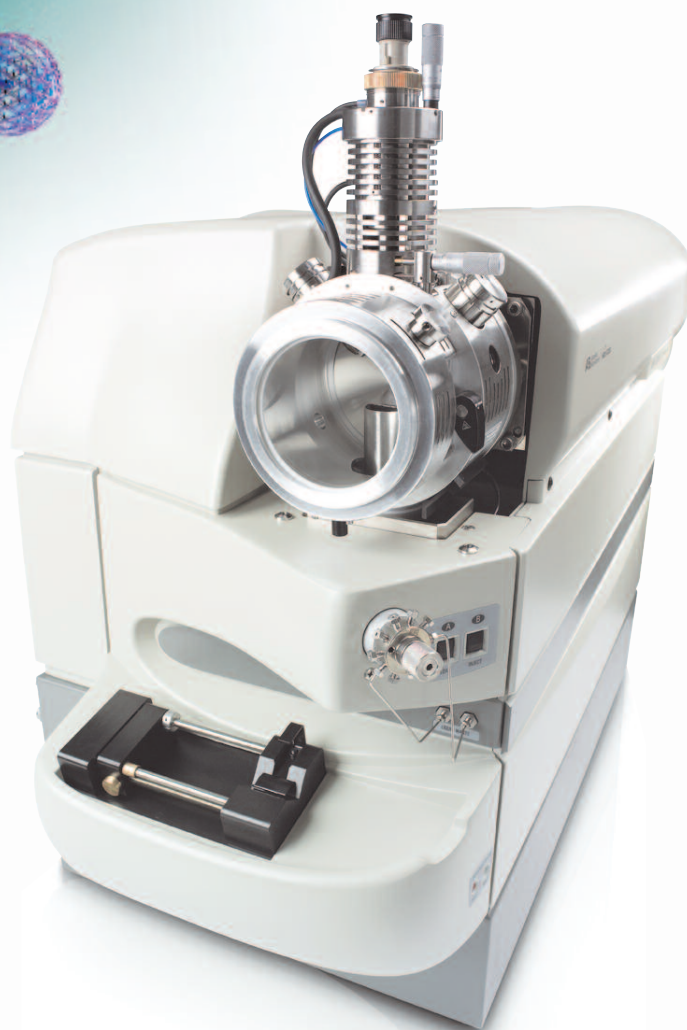


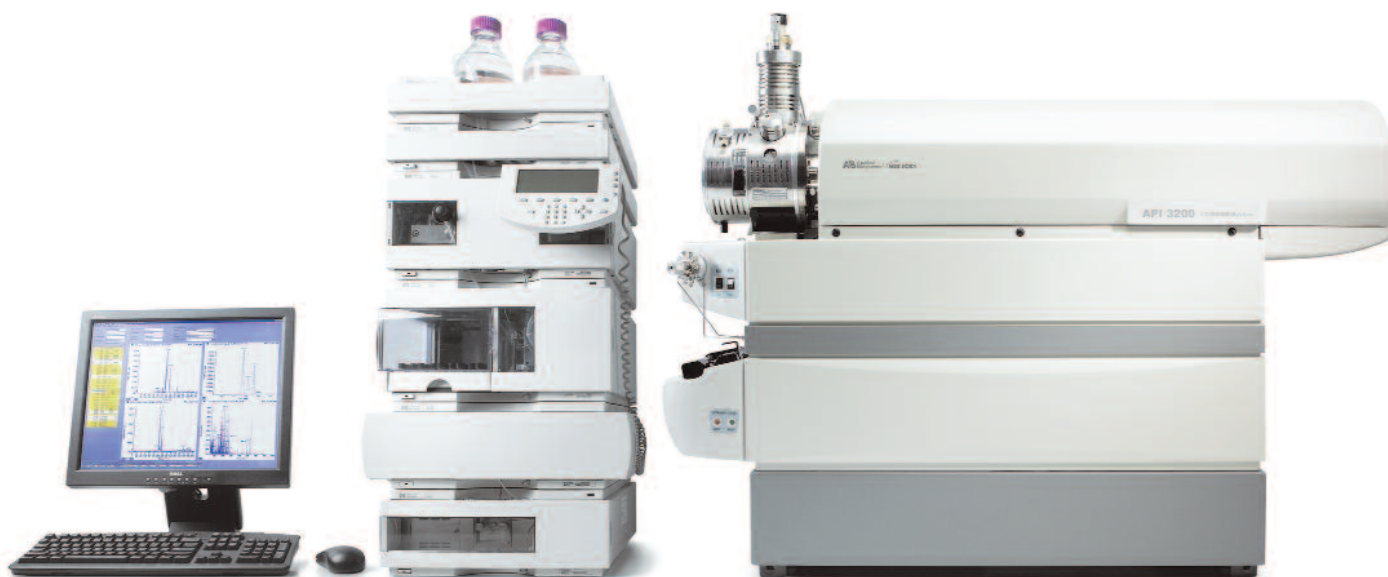
High performance,
higher productivity,
more value.



API 3200™
LC/MS/MS System

Reliability, reproducibility, and confidence in your data.

With an unmatched heritage of technology innovation and dependability, the triple quadrupole API 3200™ system offers an attractive blend of performance, throughput, and value.



The Applied Biosystems/MDS SCIEX API 3200™ LC/MS/MS system is a fully-integrated triple quadrupole mass spectrometry system that delivers outstanding sensitivity and selectivity—as well as maximum uptime—in an affordable, compact package.



High uptime, superior inter-day and intra-day reproducibility, maximum productivity.

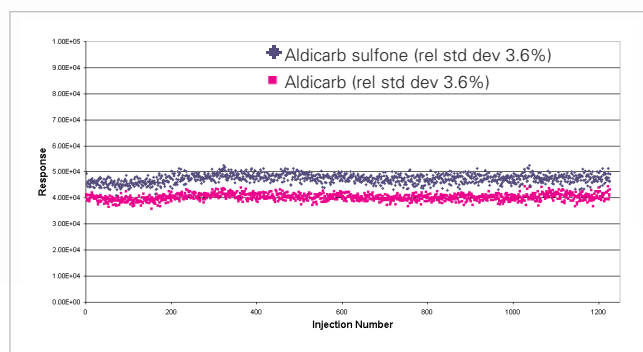
Designed for high throughput labs doing small molecule quantitation, the compact, affordable API 3200™ system delivers best-in-class reliability and reproducibility over virtually all sample types and concentrations encountered in environmental, food, clinical research, and pharmaceutical applications.

Like our industry-leading API 5000™ and API 4000™ systems, the API 3200 system platform features the Turbo V™ ion source with plug-and-play probes that let you analyze an extended range of compounds over a wide range of flow rates. Patented Curtain Gas™ interface and LINAC® collision cell technologies provide superior ruggedness and selectivity for your most exacting quantitation analyses.

Powerful software, advanced automation features, and robust engineering increase your productivity, giving you the ability to routinely analyze hundreds of samples—day after day, year after year.

- **Absolute ionization.** Innovative Turbo V™ ion source efficiently ionizes compounds and virtually eliminates cross-contamination, even with large sample loads, for high sensitivity quantitation over a wide range of flow rates.
- **Superior MS/MS performance.** Patented, proven LINAC® collision cell technology provides faster scan times allowing more compounds to be analyzed in a given run without compromising sensitivity or mass spectral quality.
- **Maximum uptime.** Proprietary Curtain Gas™ interface reduces the need for routine maintenance and ensures maximum productivity by protecting the interface region and quadrupole analyzer from contamination.

- **Greater throughput.** High productivity software applications, including automated methods development, enable unattended operation and routine analysis of hundreds of samples per day—every day.
- **Ease of use.** You don't have to be a mass spec expert to achieve expert results. Advanced acquisition and processing software completely automates setup and analysis.
- **Results, systems, and support you can count on.** The API 3200 system is backed by one of the world's most extensive service and support organizations—as well as our promise to help keep your lab up and running at maximum productivity.



Excellent ruggedness and reproducibility is demonstrated in running over 1,200 injections of carbamate insecticides extracted from soil samples. Over the 3.5 days, the API 3200™ system exhibits exceptional stability with relative standard deviations of 3.6% for the response of the two carbamates.

An affordable benchtop platform built on premier technology.

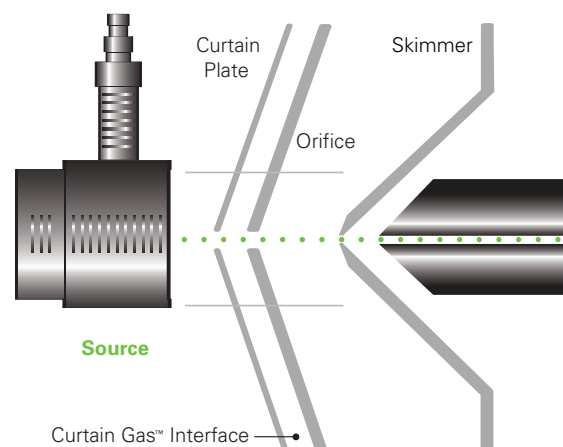
The API 3200™ LC/MS/MS system takes advantage of a number of proprietary mass spectrometry innovations to deliver the performance required by demanding applications in regulated environments—all at an excellent value.

Convenient “plug and play” ion sources.

Rugged, reliable, easily interchangeable ion sources are available for a wide range of applications and flow rates to suit your analysis needs.

Rapid source change-over minimizes downtime and simplifies routine maintenance. All connections are fully integrated into the source housing—no extra lines to attach, and no lost time.

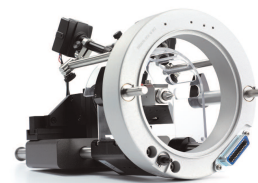
The innovative Turbo V™ ion source efficiently ionizes compounds and virtually eliminates cross-contamination, even with large sample loads. Embedded ceramic heater technology and improved gas dynamics contribute to the system's low detection limits, and enable high sensitivity quantitation over a wide flow range up to 3 mL/min. The quick-change ESI and APCI probes let you switch between ionization modes in seconds.



The DuoSpray™ source contains two separate inlets for ESI and APCI probes, allowing the optimal ionization technique and conditions for each compound during an LC run, making it an ideal tool for fast method development as well as increasing throughput and data quality.



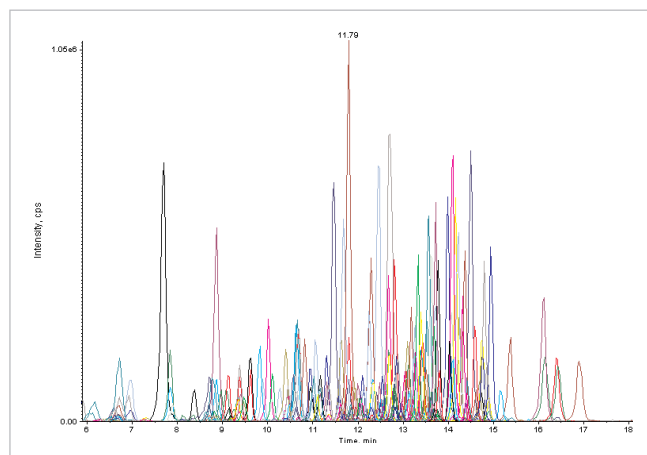
The PhotoSpray® source for atmospheric pressure photo-ionization expands the range of compounds that can be analyzed, often at higher sensitivities than ESI or APCI. The PhotoSpray® source can ionize many compounds that are not easily ionized by ESI or APCI, such as polycyclic aromatic hydrocarbons (PAH's).



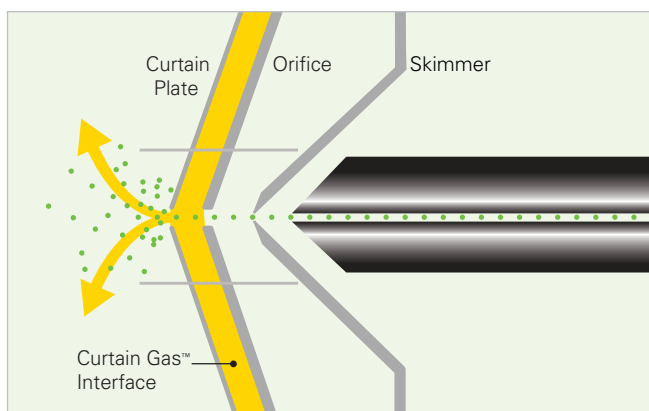
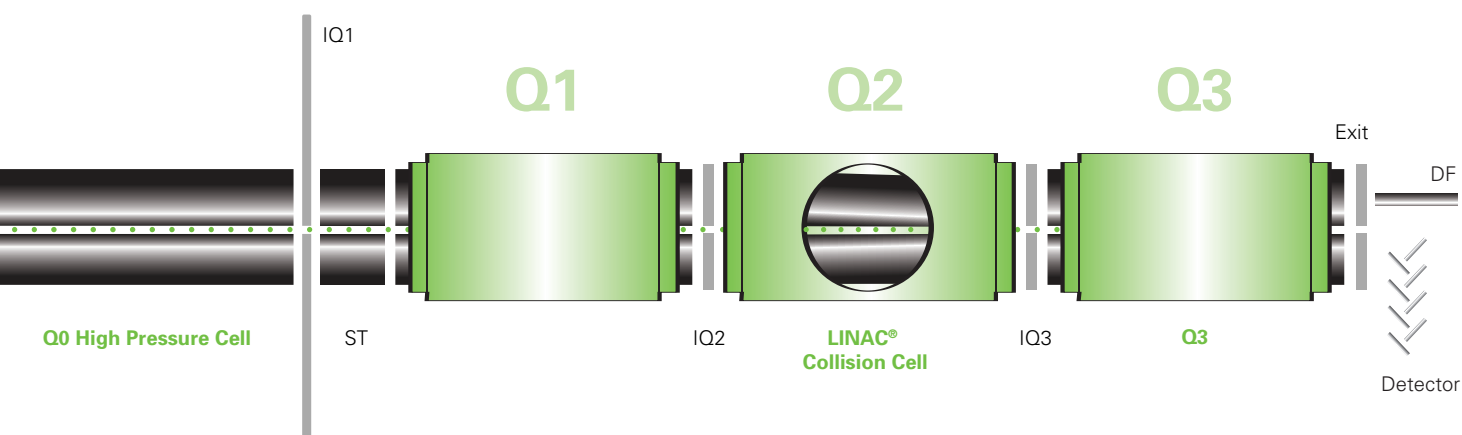
New NanoSpray® II source gives you the versatility of discrete nanospray, nanoflow or MicrolonSpray® II source capabilities for low flow work such as protein and peptide analysis. An improved interface permits more efficient transfer of ions from the NanoSpray source into the system, increasing robustness and sensitivity.

LINAC® collision cell.

Patented LINAC® collision cell ensures maximum ion transfer—free of cross-talk—from the interface to the detector in MS/MS mode, allowing simultaneous multi-component analyses and enabling you to monitor more compounds and multiple reaction monitoring (MRM) transitions without any appreciable loss in signal. LINAC collision cell technology also enables fast scanning without compromising performance in all modes of operation, including product ion, precursor ion, and neutral loss scans.



In a single MRM experiment, 300 commonly encountered pesticides are monitored to determine their presence and if their levels are above the maximum-residue limit (MRL). The entire pesticide screen, along with confirmation, is complete in less than 20 minutes, improving your lab's productivity.



Curtain Gas™ interface.

Proprietary Curtain Gas™ interface reduces the need for routine maintenance and ensures maximum uptime and productivity by protecting the interface region and quadrupole analyzer from contamination.

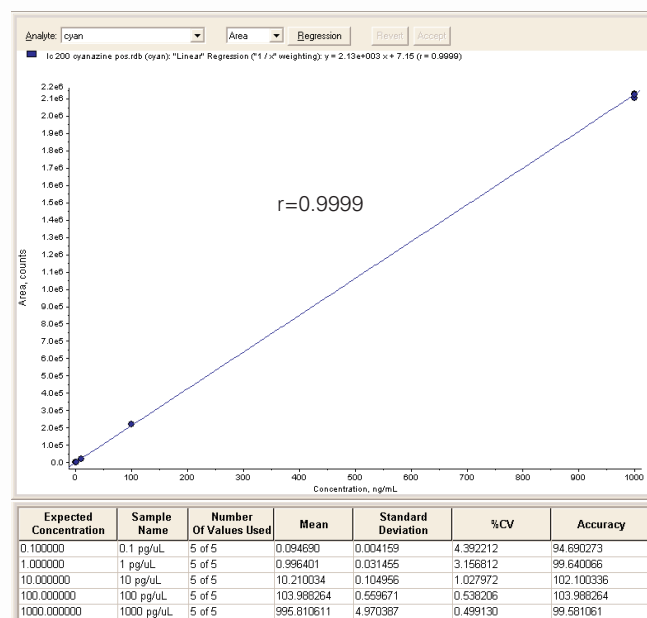
More reliable, more confident results from every experiment.

A new generation of industry-trusted Analyst® software lets you configure, tune, acquire data, explore, and quantitate with high confidence—even when working with complex matrices. You can automatically create fully optimized methods for multiple compounds, quickly generate new quantitation methods, and analyze and compare analytical results.

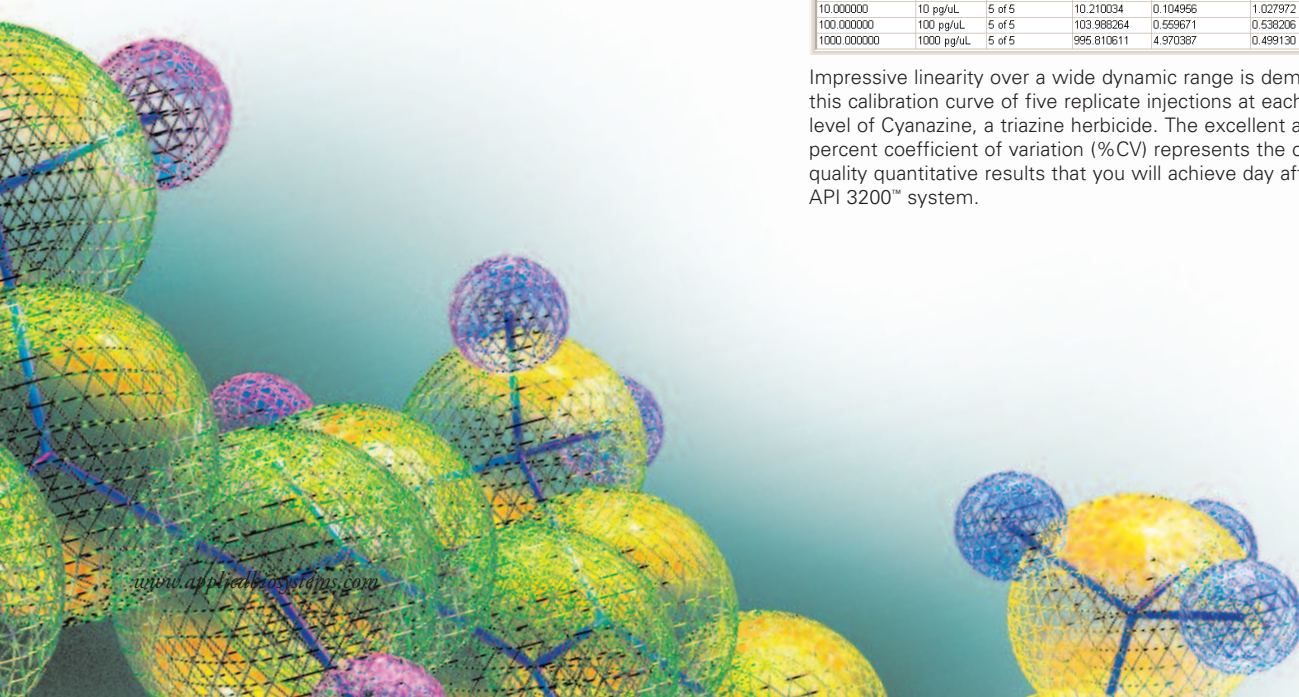
Analyst software also provides a comprehensive feature set for GLP labs, including full support for 21 CFR Part 11 compliance. It offers an easily administered, integrated security model that adapts to your lab's needs, and gives you added assurance in your data.

Powerful, automated add-on applications, such as Information Dependent Acquisition (IDA) further extend the system's data acquisition and processing capabilities.

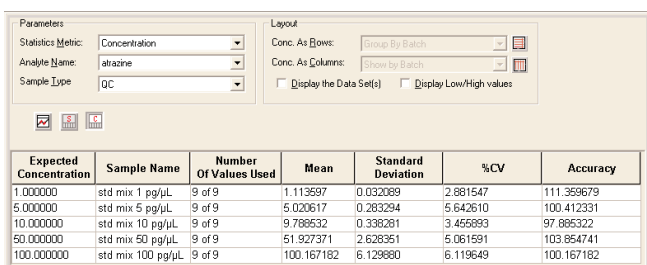
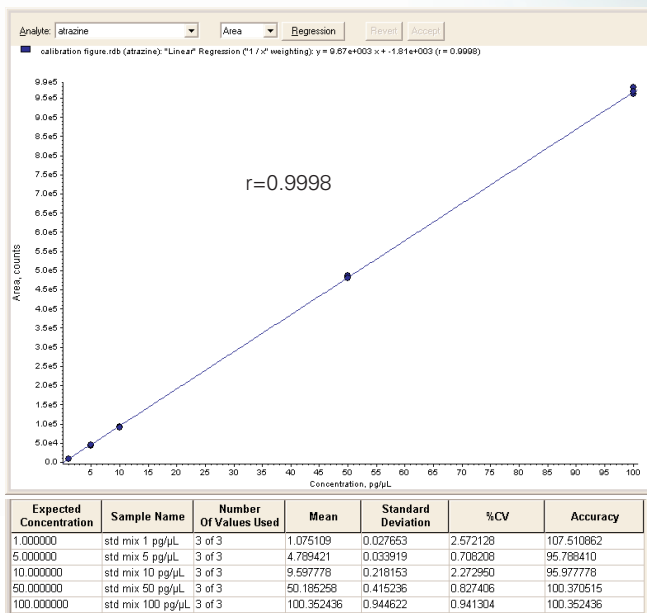
Impressive linearity over wide dynamic range.



Impressive linearity over a wide dynamic range is demonstrated in this calibration curve of five replicate injections at each concentration level of Cyanazine, a triazine herbicide. The excellent accuracy and percent coefficient of variation (%CV) represents the consistent high quality quantitative results that you will achieve day after day with the API 3200™ system.



Outstanding inter-day and intra-day quantitative performance.



To confirm the stability and reproducibility of the calibration and quantitative performance of the API 3200™ system, three replicate injections of Atrazine at each concentration level were run to create the calibration curve above.

During the course of the four day study, nine replicate injections at each concentration level were run. The %CV and accuracy surpass the typical quantitative analysis performance requirements and demonstrate the exceptional stability and reproducibility of the API 3200™ system. Outstanding inter- and intra-day quantitative performance makes rapid validation of your methods a certainty.

Simplified cross-platform methods transfer.

Many labs work with a number of Applied Biosystems/MDS SCIEX instruments—including the new API 3200™, the 3200 Q TRAP®, the API 4000™, the 4000 Q TRAP® and the new API 5000™ systems. Because all of these platforms operate with the same ion sources, methods transfer is quick and easy.

You can re-optimize your compound-dependent parameters in minutes and simply copy over the source parameters—and you are up and running your sample set on a different platform. So a method could be developed on the API 3200 system, for example, and then moved to an API 5000 system, API 4000 system, or 4000 Q TRAP system for routine analysis, without taking the higher performing instrument out of production.

Put the API 3200™ LC/MS/MS system to work in your lab.

The API 3200 system is a versatile, reliable—and affordable—LC/MS/MS system that can increase the productivity of any lab that needs high throughput, high confidence quantitation and identification. To learn more, call the Applied Biosystems sales office nearest you, or visit www.appliedbiosystems.com/3200



iScience. To better understand the complex interaction of biological processes, life scientists are developing revolutionary approaches to discovery that unite technology, informatics, and traditional laboratory research. In partnership with our customers, Applied Biosystems provides the innovative products, services, and knowledge resources that make this new, **Integrated Science** possible.

Worldwide Sales Offices

Applied Biosystems vast distribution and service network, composed of highly trained support and applications personnel, reaches 150 countries on six continents. For international office locations, please call the division headquarters or refer to our Web site at www.appliedbiosystems.com

Applera Corporation is committed to providing the world's leading technology and information for life scientists. Applera Corporation consists of the Applied Biosystems and Celer Genomics businesses. Applied Biosystems/MDS SCIEX is a joint venture between Applera Corporation and MDS Inc.

Headquarters

850 Lincoln Centre Drive
Foster City, CA 94404 USA
Phone: 650.638.5800
Toll Free: 800.345.5224
Fax: 650.638.5884

Applied Biosystems is a registered trademark and AB (Design), Applera, iScience, and iScience (Design) are trademarks of Applera Corporation or its subsidiaries in the US and/or certain other countries. Analyst, LINAC, MicrolonSpray, NanoSpray, PhotoSpray, Q TRAP, and TurbolonSpray are registered trademarks and API 3200, API 4000, API 5000, Curtain Gas, DuoSpray, and Turbo V are trademarks of Applied Biosystems/MDS SCIEX. MDS and SCIEX are registered trademarks of MDS Inc. Other trademarks are the sole property of their respective owners.

©2005 Applera Corporation and MDS Inc. All rights reserved.

Printed in the USA, 04/05, P+s,
Publication 114BR17-01